



**Asbiverse Group**  
The Excellence Transformation Accelerator

## **ASBIVERSE GROUP - The Excellence Transformation Accelerator**

### **Powered by ASB Excellence Intelligence™**

### **Table of Contents**

<b><i>The \$2.3 Trillion Crisis &amp; The \$1.5 Trillion Opportunity .....</i></b>	<b><i>1</i></b>
The \$2.3 Trillion Transformation Failure Crisis.....	1
The \$1.5 Trillion+ Market Opportunity .....	1
The Root Cause: The Intent Gap (Knowing-Doing Gap) .....	1
<b><i>The Excellence Formula™ .....</i></b>	<b><i>2</i></b>
$R_i + P_e / C_S = \text{Excellence}$ .....	2
<b><i>The Asbiverse Group Solution .....</i></b>	<b><i>2</i></b>
The Excellence Transformation Accelerator .....	2
Pillar 1: "WHY" Intent Activation (Intentonomics®) .....	2
Pillar 2: "WHAT" Capability Definition (K.S.A.R.™) .....	3
Pillar 3: "HOW" Implementation Excellence (PIFFLE®).....	3
<b><i>Strategic Brand Architecture .....</i></b>	<b><i>4</i></b>
Master Brand Excellence Transformation Accelerator Positioning.....	4
Brand Architecture: .....	5
Value Proposition: .....	5
Differentiation Statement: .....	5
<b><i>Significant Competitive Advantages.....</i></b>	<b><i>5</i></b>
Learning & Development Excellence .....	5
Business Impact Excellence .....	5
Ecosystem Multiplication Excellence .....	6
<b><i>Comprehensive Application Domains .....</i></b>	<b><i>6</i></b>
Excellence Transformation Across Key Business Areas .....	6
<b><i>The Neuroscience Advantage: NeuroAndragogy .....</i></b>	<b><i>6</i></b>
<b><i>Global Field Applications.....</i></b>	<b><i>7</i></b>

<b>Excellence Transformation Results .....</b>	<b>7</b>
<b><i>Why Traditional Approaches Fail .....</i></b>	<b>7</b>
<b><i>The Asbiverse Group Difference .....</i></b>	<b>7</b>
<b>Excellence Transformation Accelerator Advantages .....</b>	<b>7</b>
Research Based Foundation.....	7
NeuroAndragogy Application .....	8
Ecosystem Approach .....	8
Practical Validation.....	8
Sustainable Transformation .....	8
<b><i>Looking Forward.....</i></b>	<b>8</b>
<b>Leading the Excellence Revolution.....</b>	<b>8</b>

## Some Clients Serviced by Asbiverse Group



# The \$2.3 Trillion Crisis & The \$1.5 Trillion Opportunity

## The \$2.3 Trillion Transformation Failure Crisis

Organizations globally waste **\$2.3 trillion** annually on digital transformation projects alone that fail to deliver results. This staggering figure represents just one aspect of a broader systemic failure across all transformation initiatives:

- **Only 12%** of learners apply new skills from training to their jobs
- **70%** of strategic initiatives fail to achieve intended outcomes
- **90%** of training programs fail to create lasting behavioural change
- **85%** of change management efforts don't meet their objectives
- **70%** of digital transformation projects fail

This represents the largest waste of human potential and organizational resources in modern business history.

## The \$1.5 Trillion+ Market Opportunity

These systemic failures reveal an unprecedented opportunity within a **\$1.5 trillion+** global market for capability development and organizational transformation:

- **Digital Transformation & Change Management:** \$500B globally with massive failure rates
- **Management Consulting:** \$400B globally with implementation challenges
- **Corporate Training & Development:** \$350B globally seeking measurable ROI
- **Change Management Services:** \$150B globally with low success rates
- **Performance Improvement Services:** \$100B globally with temporary results
- **Digital Learning Platforms:** \$80B globally with engagement issues
- **Executive Coaching & Leadership Development:** \$30B globally with limited scalability

**The transformation economy is broken and that creates the largest untapped potential for human and organizational excellence in modern business history.**

## The Root Cause: The Intent Gap (Knowing-Doing Gap)

The most fundamental problem isn't the quality of training content or the intelligence of people but it's the **Intent Gap**: the invisible barrier between knowing what to do and actually doing it consistently.

This gap manifests across every level:

- **Individual:** People know they should exercise, develop skills, or change habits but struggle to act consistently
- **Team:** Teams understand collaboration principles but continue working in silos

### Some Clients Serviced by Asbiverse Group



- **Organizational:** Companies invest billions in digital transformation, but employees resist adoption
- **Industry:** Entire sectors recognize the need for innovation but remain trapped in legacy thinking

## The Excellence Formula™

Our methodology is built on a mathematical foundation that defines true excellence:

**Ri + Pe / CS = Excellence**

$$\text{Excellence Formula}^{\text{TM}} = \frac{Ri + Pe}{CS} = \frac{R_{\text{Results}} i_{\text{increase}} + P_{\text{Potential}} e_{\text{enhancement}}}{C_{\text{consistently}} \& S_{\text{sustainably}}}$$

**Ri (Results Increase):** Measurable performance improvement

**Pe (Potential Enhancement):** Capability development and expansion

**CS (Consistently & Sustainably):** Foundation for long term transformation

This formula ensures that excellence isn't a one-time achievement but a systematic, sustainable advantage that compounds over time.

## The Asbiverse Group Solution

### The Excellence Transformation Accelerator

**Asbiverse Group is The Excellence Transformation Accelerator**, powered by our proprietary **ASB Excellence Intelligence™ methodology**. Developed through extensive global field research and practical application across diverse industries, we address the Intent Gap through a comprehensive Three Pillar Architecture that directly operationalizes the Excellence Formula™:

#### Pillar 1: "WHY" Intent Activation (Intentonomics®)

*Drives the "CS" (Consistently & Sustainably) component by creating unshakeable commitment*

The behavioural science that activates genuine commitment and sustainable motivation through the **ORBIT Principle™** of **Intentonomics®**:



**O.R.B.I.T. Principle™** - The Engine of **Intentonomics®**

- **Opportunity:** Creating meaningful reasons to act
- **Relevance:** Ensuring deep personal and professional alignment

#### Some Clients Serviced by Asbiverse Group



- **Belief:** Building unshakeable confidence
- **Integrity of Thought:** Elevating consciousness for stronger intent
- **Trust:** Developing faith in people, process, and path

## Pillar 2: "WHAT" Capability Definition (K.S.A.R.™)

*Delivers both "Ri" (Results Increase) and "Pe" (Potential Enhancement) through comprehensive development*



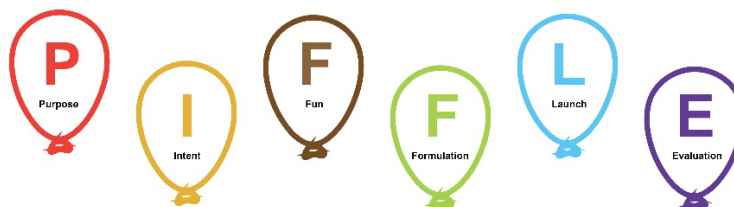
Comprehensive development frameworks across:

- **Knowledge:** Information and understanding
- **Skills:** Practical abilities and competencies
- **Attitudes:** Mindsets and behavioural patterns
- **Results:** Measurable outcomes and performance indicators

## Pillar 3: "HOW" Implementation Excellence (PIFFLE®)

*Ensures the entire Excellence Formula™ is activated through neuroscience enhanced execution using **NeuroAndragogy (The Science of how Adults Learn)***

**PIFFLE®** Model of Instructional and Change Design



~~NonSense~~

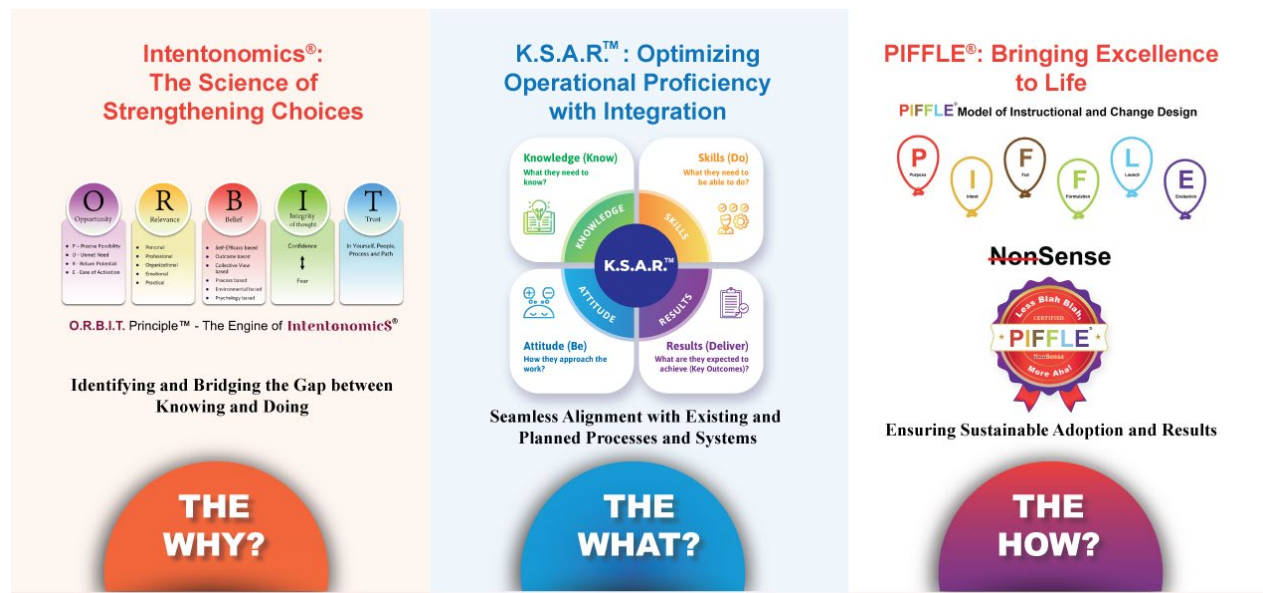
### Some Clients Serviced by Asbiverse Group



Neuroscience enhanced methodology ensuring sustainable adoption:

- **Purpose:** Define compelling vision and clear outcomes
- **Intent:** Activate commitment through behavioural science (integrating Intentonomics® and ORBIT Principle™)
- **Fun:** Create engagement through brain optimized learning using the principles of NeuroAndragogy
- **Formulation:** Structure comprehensive development content (integrating K.S.A.R.™ frameworks)
- **Launch:** Drive adoption through systematic ecosystem activation
- **Evaluation:** Measure impact and continuous improvement

The Three Pillars work synergistically to ensure every element of the Excellence Formula™ is systematically activated, creating exponential transformation that is both measurable and sustainable.



## Strategic Brand Architecture

### Master Brand Excellence Transformation Accelerator Positioning

**Master Brand:** Asbiverse Group - The Excellence Transformation Accelerator

**Core Methodology:** ASB Excellence Intelligence™ (Powers the transformation acceleration)

#### Some Clients Serviced by Asbiverse Group



## Brand Architecture:

*Asbiverse Group - The Excellence Transformation Accelerator*

- Powered by ASB Excellence Intelligence™
  - Commercial Excellence Transformation Accelerator
  - Leadership Excellence Transformation Accelerator
  - Talent Excellence Transformation Accelerator
  - Marketing Excellence Transformation Accelerator
  - Operational Excellence Transformation Accelerator
  - Individual Excellence Transformation Accelerator

## Value Proposition:

*"Asbiverse Group doesn't just transform what you do, we transform how excellently you do it."*

## Differentiation Statement:

*"While others accelerate change or digital transformation, Asbiverse Group accelerates excellence transformation; the sustained elevation of human and organizational capability."*

## Significant Competitive Advantages

Asbiverse Group is designed to deliver substantial improvements as **The Excellence Transformation Accelerator powered by ASB Excellence Intelligence™**:

### Learning & Development Excellence

- **10x Learning Speed:** Brain optimized approaches designed to accelerate learning by up to 1000%
- **95% Retention Rate:** Neuroscience based techniques targeting long term retention vs. 10% traditional
- **90% Behavioural Sustainability:** Framework designed for participants to maintain new behaviors after 12 months vs. 10% traditional

### Business Impact Excellence

- **25x ROI:** Organizations positioned to achieve average ROI of up to 175%+ vs. 7% with conventional approaches
- **Digital Transformation Success:** Framework targets 90%+ success rate vs. 30% industry average
- **Employee Engagement:** Methodology designed for significant improvement through neuroscience enhanced development

### Some Clients Serviced by Asbiverse Group





## Ecosystem Multiplication Excellence

Benefits designed to compound through network effects, knowledge transfer, and community building, creating sustainable competitive advantages that extend far beyond initial investments.

## Comprehensive Application Domains

### Excellence Transformation Across Key Business Areas

Our Excellence Transformation Accelerator operates across six specialized excellence transformation areas:

1. **Individual Excellence Transformation Accelerator:** Personal development and life fulfilment
2. **Leadership Excellence Transformation Accelerator:** Executive development and organizational transformation
3. **Talent Excellence Transformation Accelerator:** Human capital and organizational capability
4. **Marketing Excellence Transformation Accelerator:** Brand building and customer engagement optimization
5. **Commercial Excellence Transformation Accelerator:** Revenue optimization and market success
6. **Operational Excellence Transformation Accelerator:** Process efficiency and system optimization

Each domain contains integrated frameworks that work synergistically to create complete **Capability Ecosystems**.

## The Neuroscience Advantage: NeuroAndragogy

Our Excellence Transformation Accelerator integrates established neuroscience principles with practical field insights, designing learning experiences that work with natural brain function of Adults:

- **Neuroplasticity Application:** Accelerated learning through brain optimized design principles
- **Memory Enhancement:** Improved retention through proven cognitive techniques
- **Attention Optimization:** Cognitive load management for maximum focus and engagement
- **Social Learning Integration:** Collaborative development through mirror neuron principles
- **Behavioural Design:** Systematic habit formation for sustainable excellence

### Some Clients Serviced by Asbiverse Group





# Global Field Applications

## Excellence Transformation Results

Through extensive field application across diverse industries and geographies, organizations are positioned to achieve significant improvements through The Excellence Transformation Accelerator:

- **Fortune 500 Companies:** Digital transformation success rates potentially improved from 30% to 90%+
- **Mid-Market Enterprises:** Accelerated capability building targeting 25x ROI improvement
- **Educational Institutions:** Learning effectiveness potentially increased by 600%+
- **Government Agencies:** Policy implementation success targeting 400%+ improvement
- **Healthcare Systems:** Best practice adoption potentially increased by 500%+

These projections are based on field observations and initial implementations across multiple sectors and regions, with full validation pending comprehensive measurement studies.

## Why Traditional Approaches Fail

Conventional training and development methods fail because they:

- **Ignore Established Principles:** Don't leverage proven neuroscience and behavioural insights
- **Lack Systematic Design:** Use ad hoc rather than methodologically grounded approaches
- **Focus on Events vs. Systems:** Create isolated interventions instead of ecosystem transformation
- **Miss the Intent Gap:** Assume knowledge transfer equals behavioural change
- **Neglect Sustainability:** Don't build habits and environmental support for lasting change

## The Asbiverse Group Difference

### Excellence Transformation Accelerator Advantages

We solve these fundamental flaws through:

### Research Based Foundation

Drawing from established research in neuroscience, behavioural economics, cognitive psychology, and organizational development, combined with extensive global field validation.

#### Some Clients Serviced by Asbiverse Group



## NeuroAndragogy Application

We use NeuroAndragogy, the science of how adults learn, rather than Pedagogy (the science of how children learn) that most training and transformation organizations rely on. This critical distinction enables us to design learning experiences specifically optimized for adult brain function, motivation patterns, and real world application needs.

## Ecosystem Approach

Rather than isolated interventions, we create comprehensive Capability Ecosystems that integrate people, processes, technology, networks, and intelligence.

## Practical Validation

Our methodology has been refined through real world application across diverse industries, cultures, and organizational contexts, ensuring robust adaptability and effectiveness.

## Sustainable Transformation

We don't just create change but we build systems that ensure excellence becomes self reinforcing and continuously evolving.

## Looking Forward

### Leading the Excellence Revolution

**Asbiverse Group** represents a new frontier in human development and organizational transformation as **The Excellence Transformation Accelerator powered by ASB Excellence Intelligence™**. While others struggle with traditional limitations, forward thinking leaders are positioned to achieve significant results through methodologically advanced excellence.

The question isn't whether you need better results but whether you're ready to move beyond conventional approaches and unlock the exponential potential that exists within you and your organization through excellence transformation.

*Join the Excellence Revolution.*

### Some Clients Serviced by Asbiverse Group

